

# AVAIL RAILS

**We have a wide range of sizes, finishes and combinations to suit your specific needs. Bespoke designs can be created to suit you.**

Avail rails and seats are a handy assistant for getting on and off the toilet, stability in the shower, getting in and out of the bathtub and walking up small sets of stairs.

## TYPES OF RAILS

- Angled rails help you pull forward and push down, and the rail stays within comfortable reach as you sit down and stand up.
- Horizontal rails help you push yourself up and keep your balance.
- Vertical rails are easy to hold on to at different heights.
- 25mm diameter rail are great for smaller hands and double as a strong towel rail, 32mm rails provide a more ergonomic grip and are suitable for public bathrooms.



# AS1428.1 BATHROOM GRAB RAILS & SHOWER SEATS

**Accessible, compliant bathrooms that meet the highest safety standards, beautifully designed to complement your stylish decor.**

Many of the dimensions in this guide have been transcribed from the Australian standard 'Design for Access and Mobility' grab rails and shower seats. Some dimensions in the standard have been specified to the top of the grab rail. Our dimensions are to the centre to allow easier understanding for installation.

**The rails and seats are only as strong as the wall they are installed onto.**

Calibre grab rails are modular in design allowing modification on site to suit each bathroom. The rails can be quickly cut down to any size in each direction.

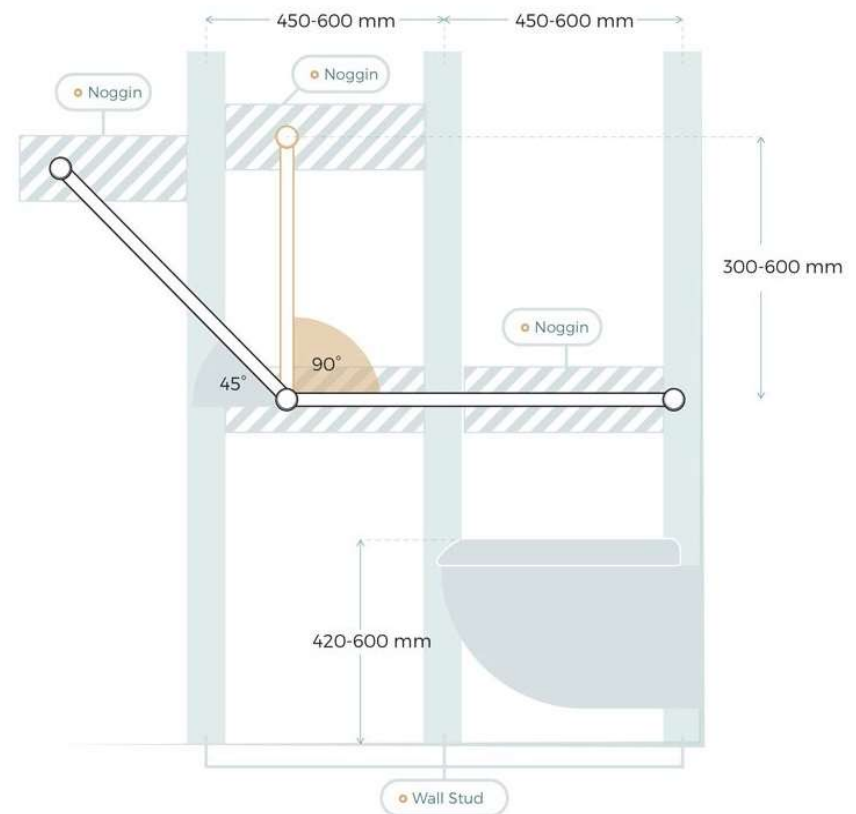
**Avail rails and shower seats have been independently tested and approved to AS1428.1 and are rated to 150kg when installed correctly.**

Australian Standard  
AS1428.1-2009  
Design for Access &  
Mobility - Grab Rails

Approved by a NATA  
certified test  
laboratory



## WALL REINFORCEMENT



To comply with AS1428.1, Grab rails and shower seats must meet the minimum required load capacity of 1100N (approx. 110kg) in each direction. Uninterrupted passage of the hand is required for the full length of the angled, horizontal or vertical sections of the rails (a mounting point at the change in direction is compliant).

To achieve this, stud walls may require reinforcing with timber noggins between wall studs. If access can be gained from the other side of the wall this can save pulling tiles off. If the wall is masonry or brick, screws and wall plugs may be used.

# LDK VILLAGE

CASE STUDY - GREENWAY VIEWS, ACT

**Winner of The Urban Developer Awards  
Development of the year 2020**  
- Retirement, Aged Care and Senior Living

The stunning new LDK Aged Care in Canberra has our Calibre Brushed Gold Grab Rails installed in their Ambulant and DDA bathrooms.

They have also installed Calibre Ergo 600mm towel/grab rails in each of their assisted living units. LDK's progressive approach is a great example of the future of aged care.



“ People are very proud no matter what their age or circumstance and no one wants their home to look like a therapy centre. Thankfully Avail provide a really great looking solution to help mobility and independence. ”  
We love them.

Project manager



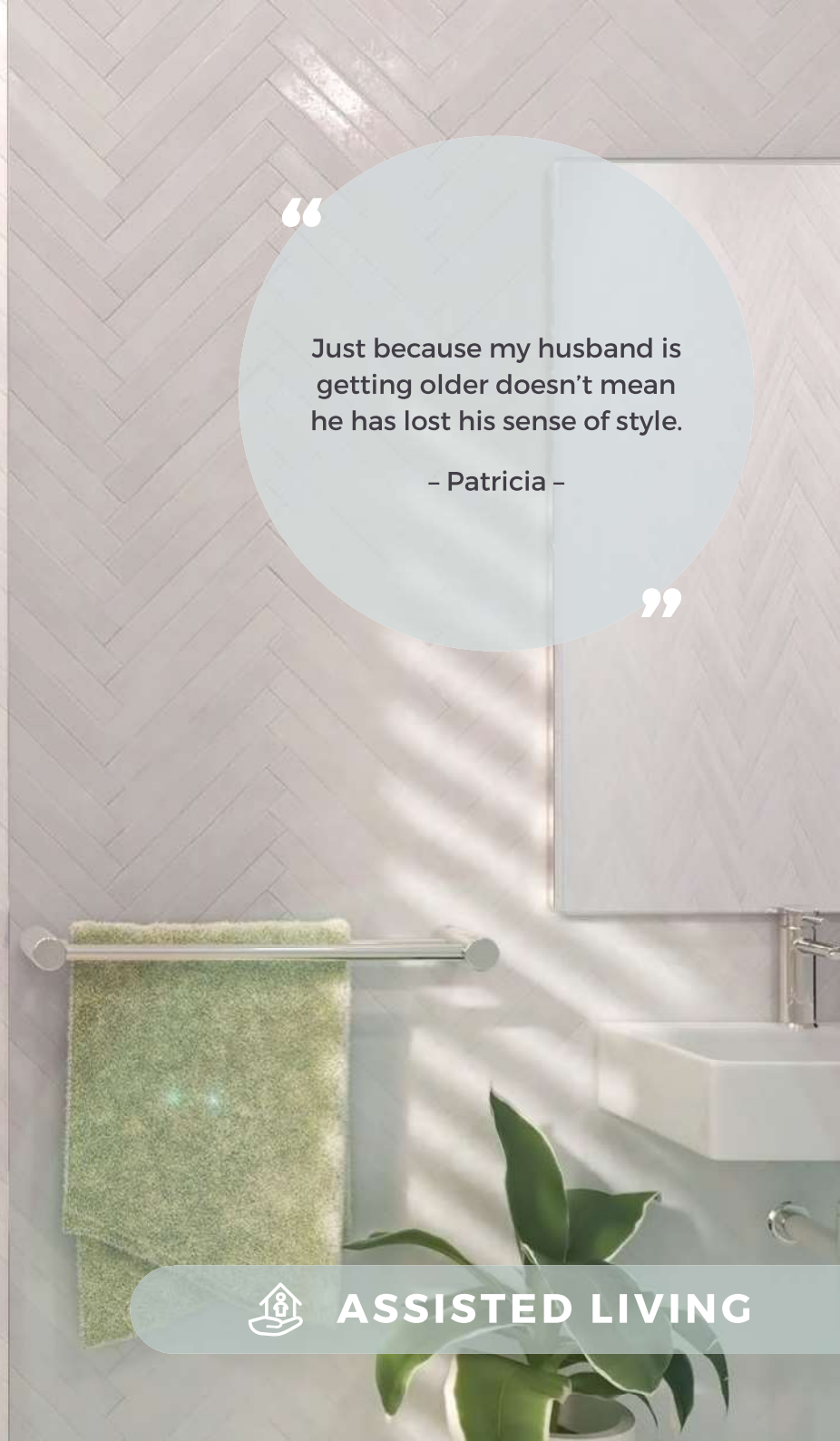


“

Just because my husband is getting older doesn't mean he has lost his sense of style.

– Patricia –

”



ASSISTED LIVING



## ASSISTED LIVING

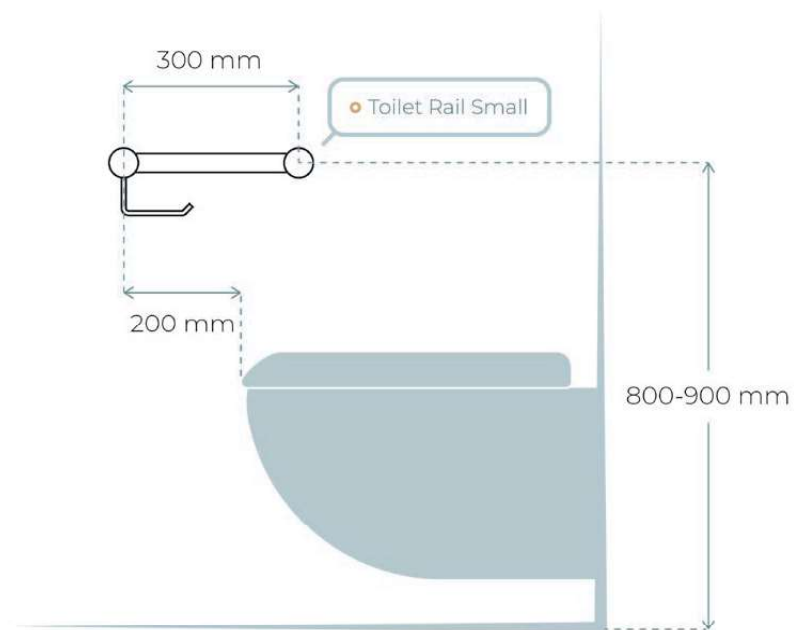
We have selected a range to provide ergonomic, comfortable and accessible bathrooms. Retirement Homes/Independent Living/ Assisted Living apartments and houses are not required to meet AS1428.1.

In consultation with Occupational therapists we have created these recommended locations for grab rails and shower seats.

## ASSISTED LIVING TOILET RAILS



### FRONT VIEW



- Calibre Grab Rail with Toilet Roll Holder or Heavy Duty Holder







“

It doesn't make you feel like you have a disability, it fits into the bathroom like it should be there.

- Sue -

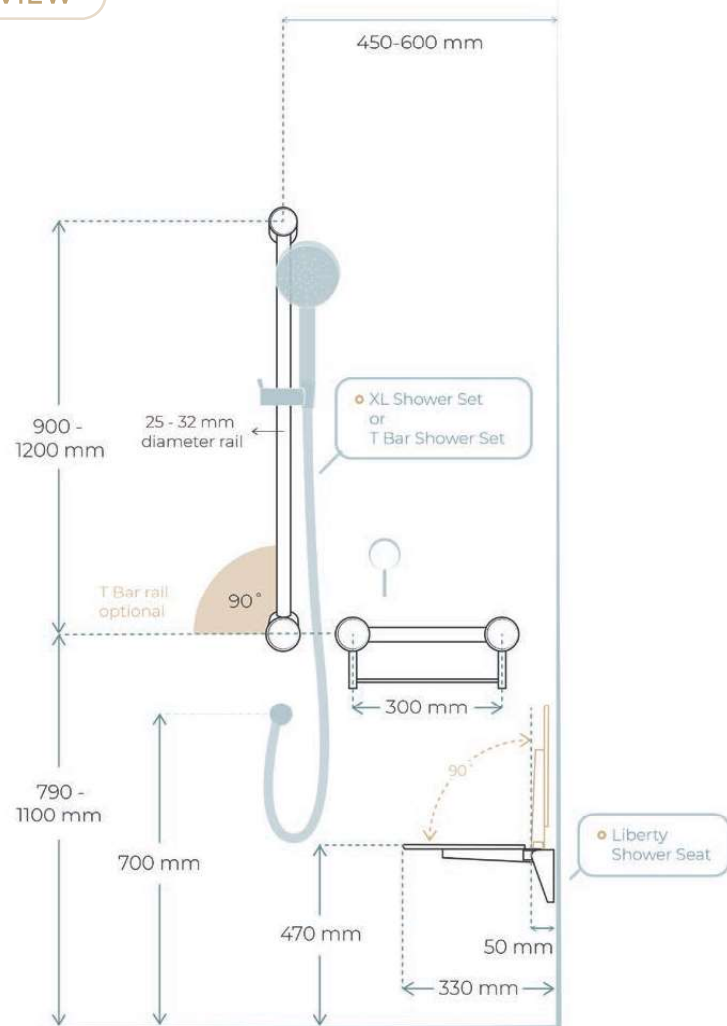
”



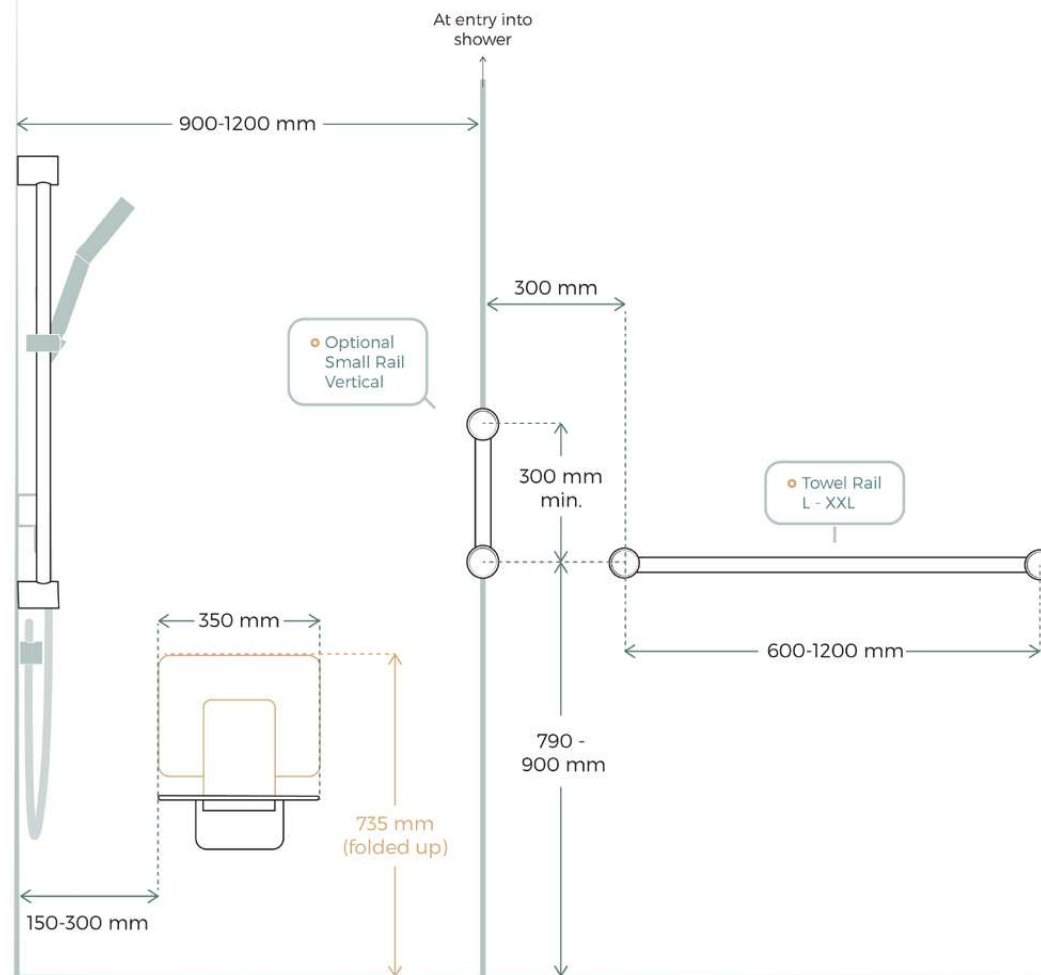
## ASSISTED LIVING SHOWER - PREMIUM



FRONT VIEW



SIDE VIEW



Liberty 350 Fold Up Shower Seat

Grab Rail Shower Set Vertical or T Bar

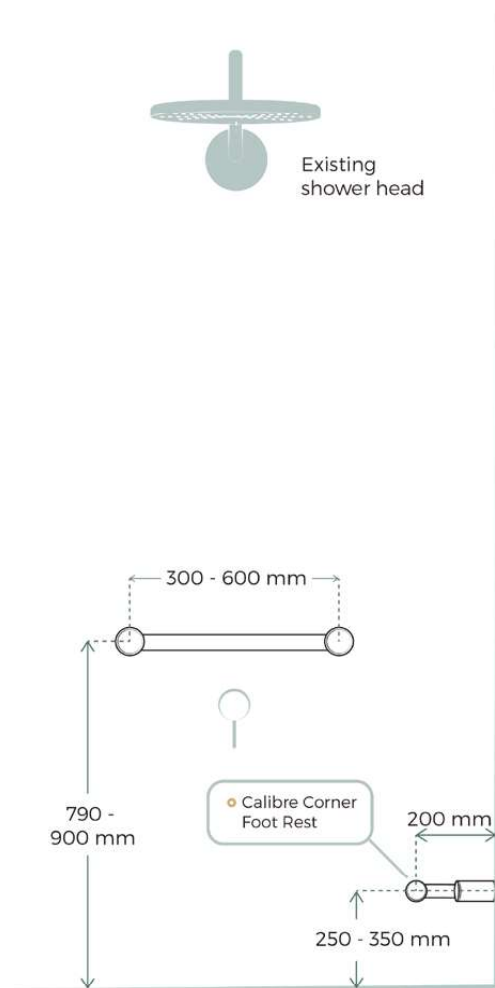
Single or Double Grab Rail With Towel Holder



## ASSISTED LIVING SHOWER - BASIC

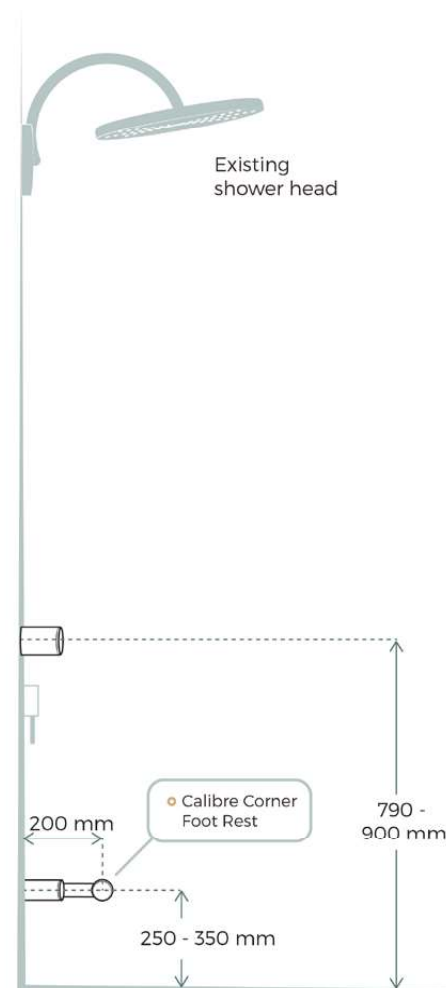


FRONT VIEW



○ Grab Rail 32 or 25mm

SIDE VIEW

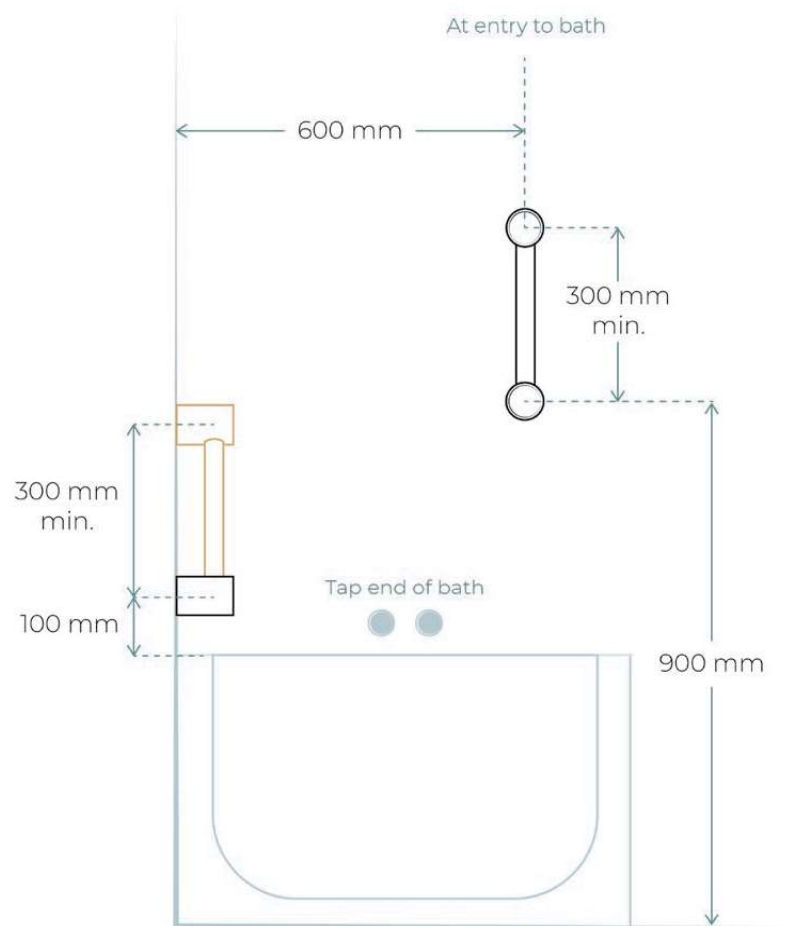


○ Calibre Mod Footrest/Corner Rail

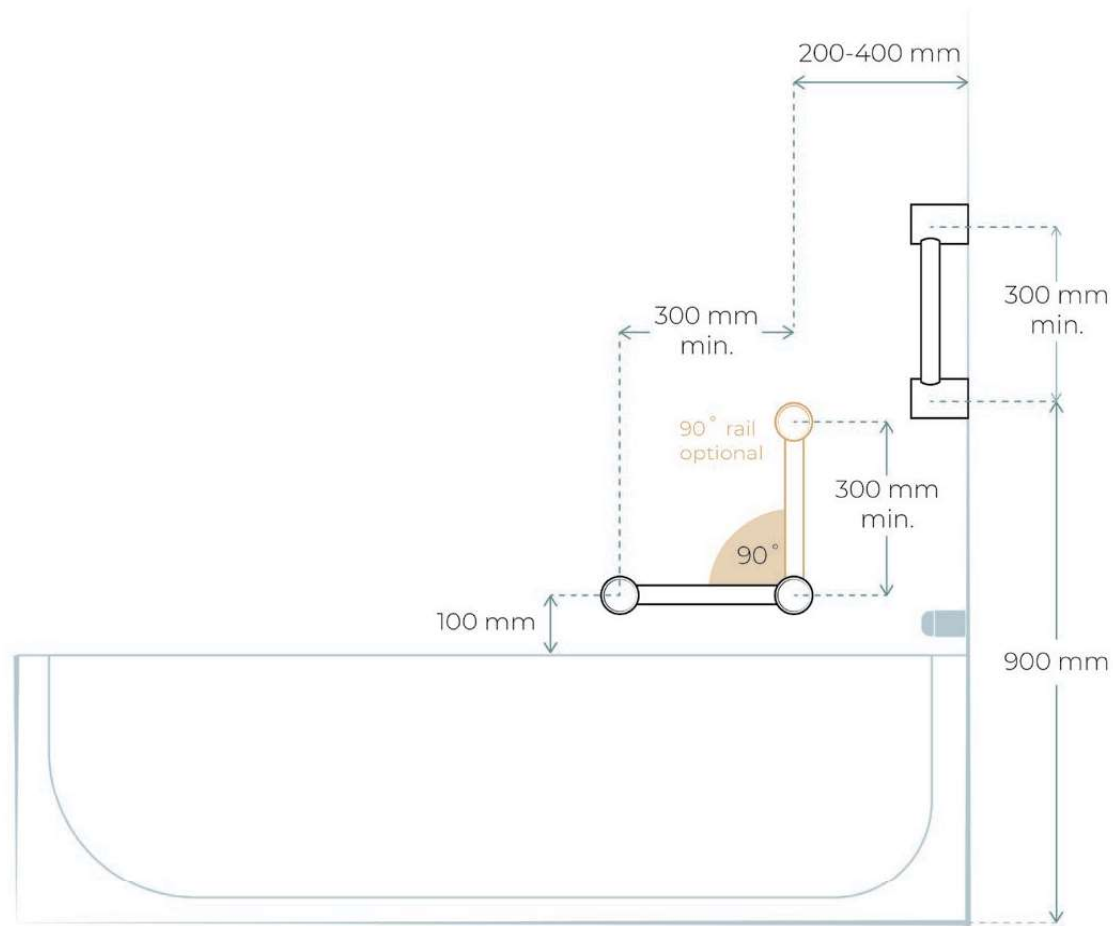
## ASSISTED LIVING BATH RAIL



FRONT VIEW



SIDE VIEW



Calibre Ergo or Mod Grab Rail





## AMBULANT TOILET RAILS

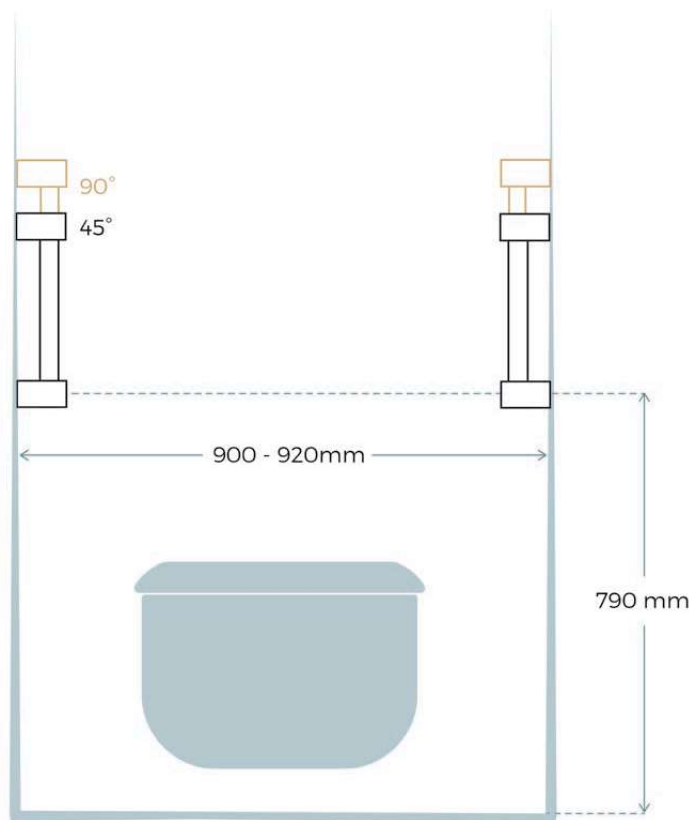
Ambulant grab rails are required in both male and female public toilets and commercial toilet facilities. Both left hand and right rails are required for Ambulant toilets. Our add on toilet roll holder is suitable for left or right hand rails.

Avail Ambulant grab rails and seats are all compliant and approved to AS1428.1. Towel rails are not included in the standard.

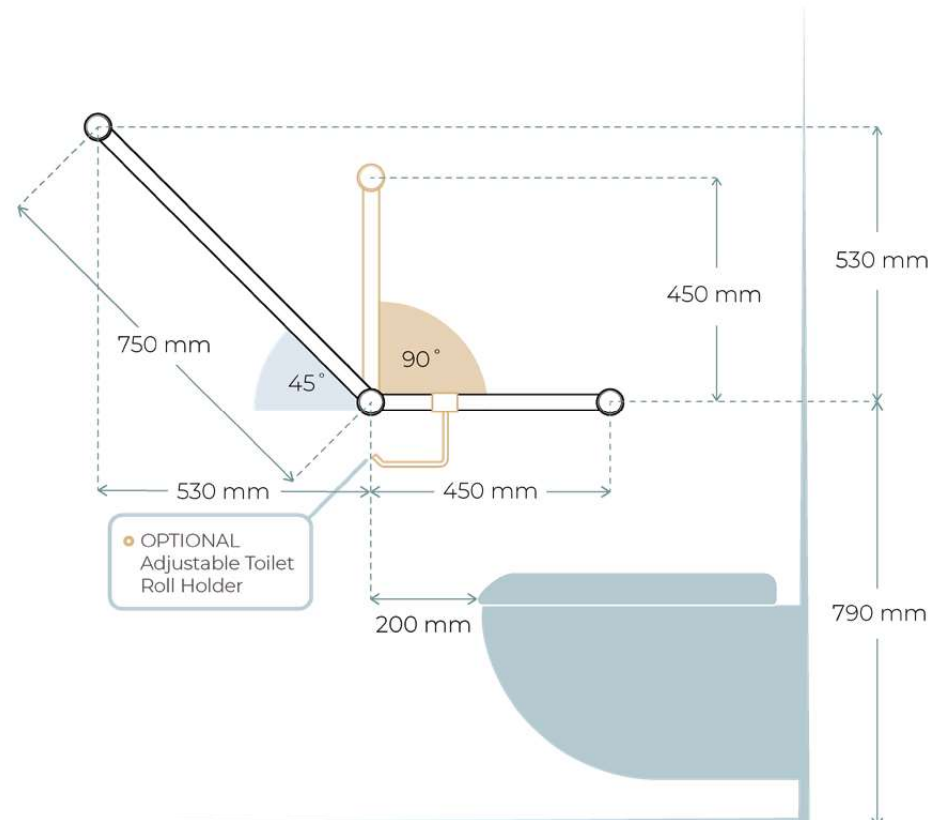
## AMBULANT TOILET RAILS



FRONT VIEW



SIDE VIEW



- Calibre Mod Ambulant 45 or 90 Degree Angled Grab Rail

- Add on toilet roll holder





“

We love being able to show customers the Avail range because we know that people won't view them as "hospitalish" and will be much more likely to accept them to make their bathroom areas safer.

- Leef ILS -

”



**DDA WHEELCHAIR ACCESSIBLE BATHROOMS & TOILET**



## DDA WHEELCHAIR PUBLIC ACCESSIBLE BATHROOMS & TOILET RAILS

DDA rails are designed for wheelchair users in public sanitary spaces. The following dimensions have been transcribed from the Australian standard.

Avail DDA grab rails, shower seats and toilet backrests are all compliant and approved to AS1428.1.

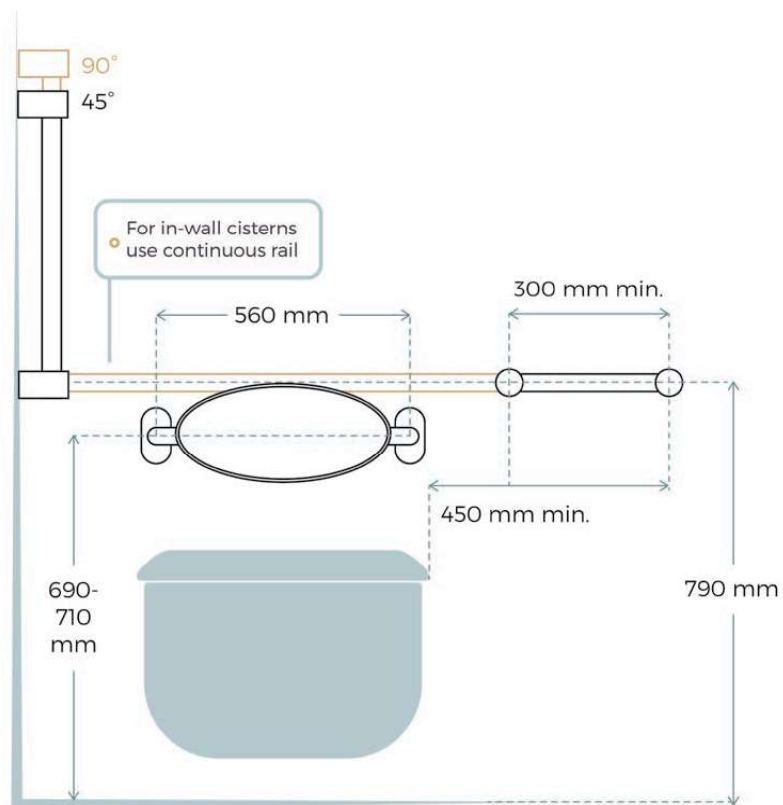


## DDA WHEELCHAIR ACCESSIBLE TOILET



There are options to suit in wall or external toilet cisterns.

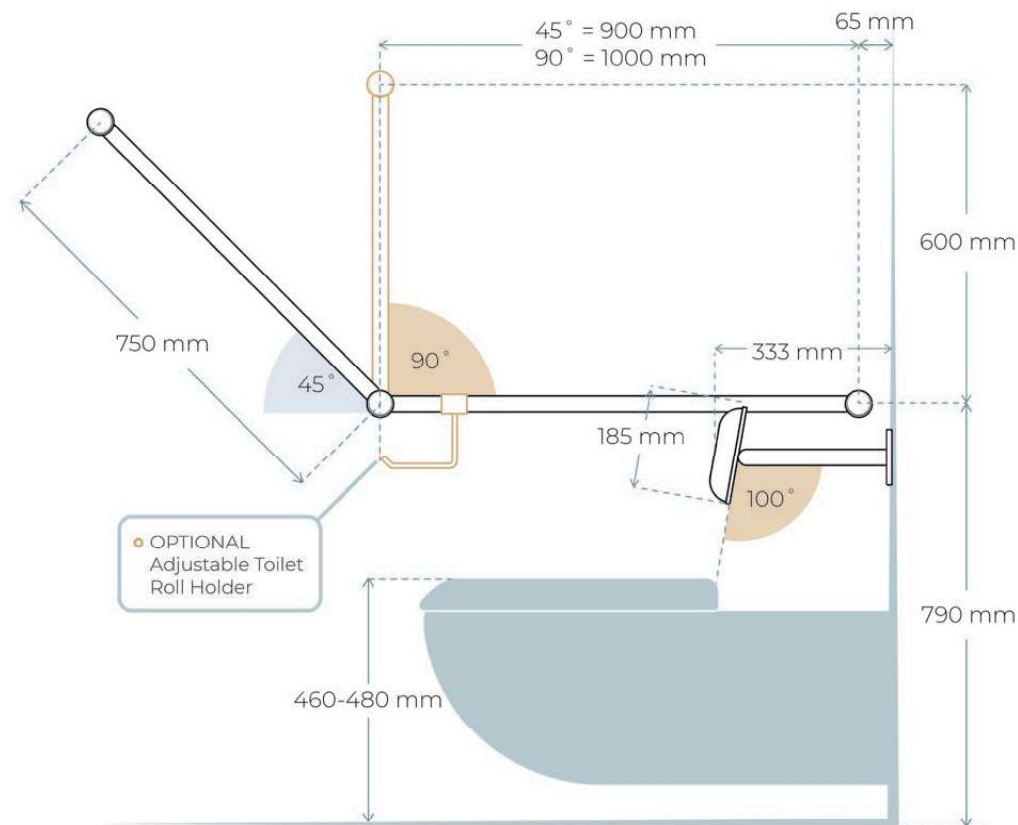
### FRONT VIEW



• Avail Toilet Back Rest

• Calibre Mod 45 or 90 Degree DDA Toilet Grab Rail Set

### SIDE VIEW

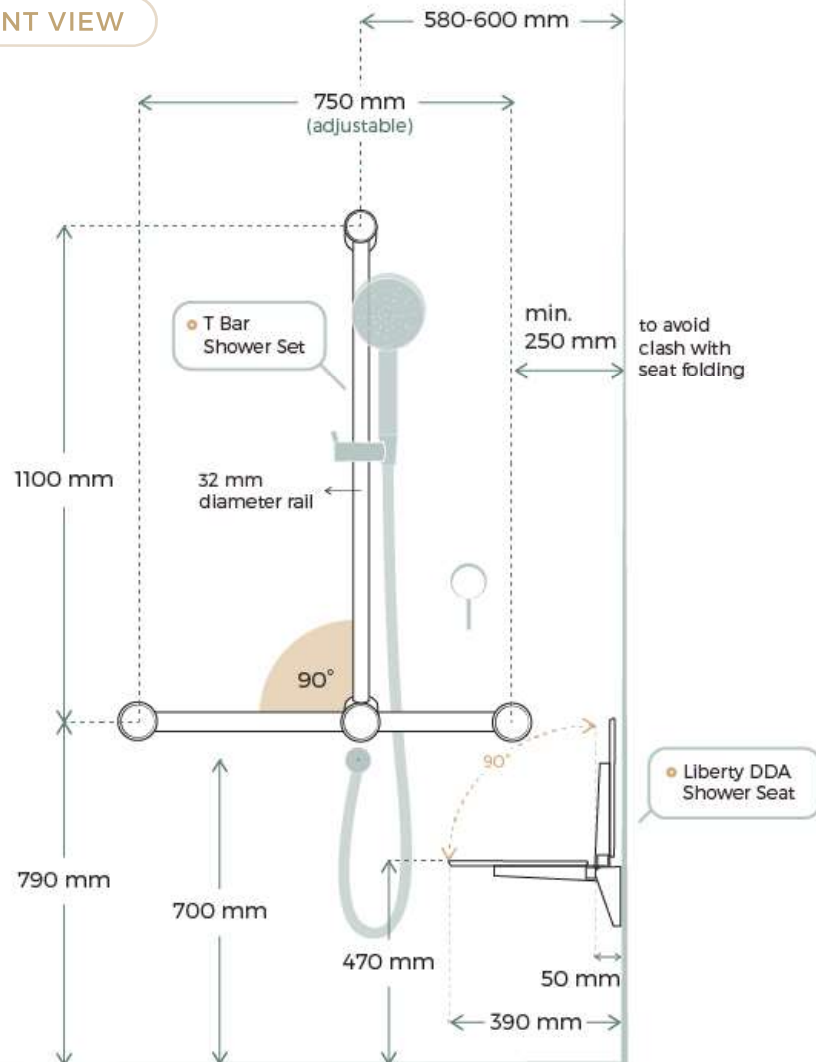


• Add on toilet roll holder (R01AT)

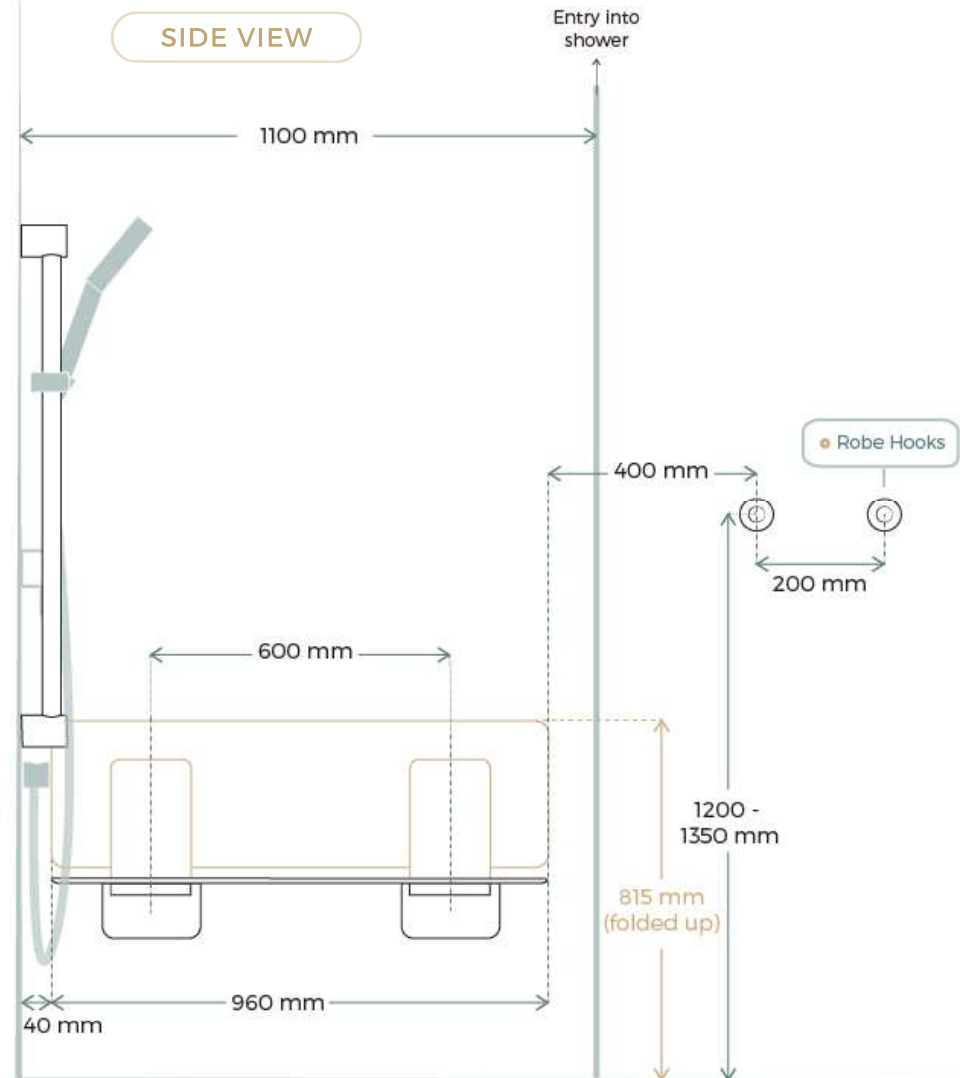
## DDA WHEELCHAIR ACCESSIBLE SHOWER



FRONT VIEW



SIDE VIEW



Calibre Mod T Bar 1100 x 750 Grab Rail & Shower Set

Liberty DDA 960 Fold Up Shower Seat

Calibre Mod Grab Rail with Towel Holder or Robe Hooks