

AS1428.1 WHEELCHAIR AND AMBULANT ACCESSIBLE BATHROOMS 2023A



- 1 Select Finish
- 2 Select Items
- 3 Request Quote

DDA bathrooms are designed for ambulant and wheelchair users in public sanitary spaces (showers and toilets). The following dimensions have been transcribed from the AS1428.1 Design for Access and Mobility.

Avail DDA grab rails, shower seats and toilet backrests have been independently tested and approved to all AS1428.1 requirements for grab rails by a NATA accredited test lab.

WWW.AVAIL.DESIGN





Please note, check lead time before ordering, some finishes may require a few weeks to prepare.

Add finish code to end of product code.



Polished Stainless Chrome | Code: C

The most popular of our range is the Polished Stainless Chrome. With the beauty of a Chrome finish that will never chip or flake and will last a lifetime. The marine grade stainless steel has been polished to a Chrome finish reflection.



Matte Black | Code: MB

A sleek, dark finish that provides a strong contrast to lighter surfaces and a warmer touch compared to metal finishes. The ever popular Matt Black matches leading bathroom tap ware finishes.



Brushed Gold | Code: BG

The brushed warm 18 Carat Golden tones create a stunning warm appearance.



Brushed Brass | Code: BB or LB

Warm up the bathroom with the lux Brushed Brass finish. This popular soft champagne like finish comes in living naturally ageing brass or clear coated. The living Brass can be re-brushed or polished to retain the original look or left to age naturally. Uncoated Brass has anti microbial properties that continuously kill bacteria and viruses as it changes colour making it perfect for bathroom settings.



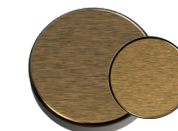
Gunmetal | Code: GM

The shadowy charcoal offers a lighter matte finish.



Brushed Nickel | Code: BN

A warm Grey textured appearance offering a subtle matte look. This natural finish gives the identical appearance of Brushed Nickel using a stainless steel material ensuring it will last a lifetime without wearing off.



Brushed Bronze | Code: BZ

The brushed earthy tones of Bronze creates a natural warmth. This new finish is quickly becoming one of the most popular.



Mix and Match | Code: Custom

We can create a range of bespoke options for you. Other finishes including Bronze, Brushed Chrome, Pearl Black, Antique Brass or a mix of finishes for Grab Rails are available on request.



AVAIL PRODUCTS:

- 1** Grab Rail Set - 4 options: 45, 90 degree or continuous for in wall cisterns
 - 2** Toilet Backrest with cushion
 - 3** Add on toilet roll holder - single or double
- All available in our full colour range in removable adaptable options



The toilet requires a grab rail on side and back walls and a backrest. The cistern can be in wall or standard, either option must have raised flush buttons. An extended toilet pan is also required.

The Backrest and Grab Rails can quickly be removed for commode or ambulant users.

WWW.AVAIL.DESIGN

Australian Standard
AS1428.1-2009
Design for Access &
Mobility

Tested by a NATA
accredited
laboratory





Product Name

Info & Code

Finish Code: C, MB, GM, BN, BB or BG



Calibre Mod 32 DDA Grab Rail
Set 90 Degree For Cistern
Toilets

600x1000 + 300 grab rail set for toilets
with cisterns

R01AD90



Calibre Mod 32 DDA Grab Rail
Set 45 Degree For Cistern
Toilets

750x900 + 300 grab rail set
for toilets with cisterns

R01AD45



Calibre Mod 32 DDA Toilet Grab
Rail Set 90 Degree Continuous
Left/Right hand to
be specified

600x1065x1025 grab rail set
for toilets without cisterns

R01CD90L

R01CD90R



Calibre Mod 32 DDA Toilet Grab
Rail Set 45 Degree Continuous
Left/Right hand to
be specified

750x965x1025
grab rail set for toilets without cisterns

R01CD45L

R01CD45R



Product Name

Info & Code

Finish Code: C, MB, GM, BN, BB or BG



Add on Toilet Roll
Holder (for any 32mm
Grab Rail)

Can be added onto any
Calibre Mod rail

R01AH



Add on Double Toilet
Roll Holder (for any
32mm Grab Rail)

Can be added onto any
Calibre Mod rail

R01AHD



Calibre Heavy
Duty Toilet Roll
Holder

110kg capacity subtle
strong point for the toilet

R01H

**Product Name**
Info & Code
Finish Code: C, MB, GM, BN, BB or BG


Back Rest DDA Toilet -
White Cushion

560mm Bracket centres.
Rail available in different
finishes
R01R1W



Back Rest DDA Toilet -
Black Cushion

560mm Bracket centres.
Rail available in different
finishes
R01R1B

Product Name
Info & Code
Finish Code: White and Black


Back Rest Removable
Cap Option

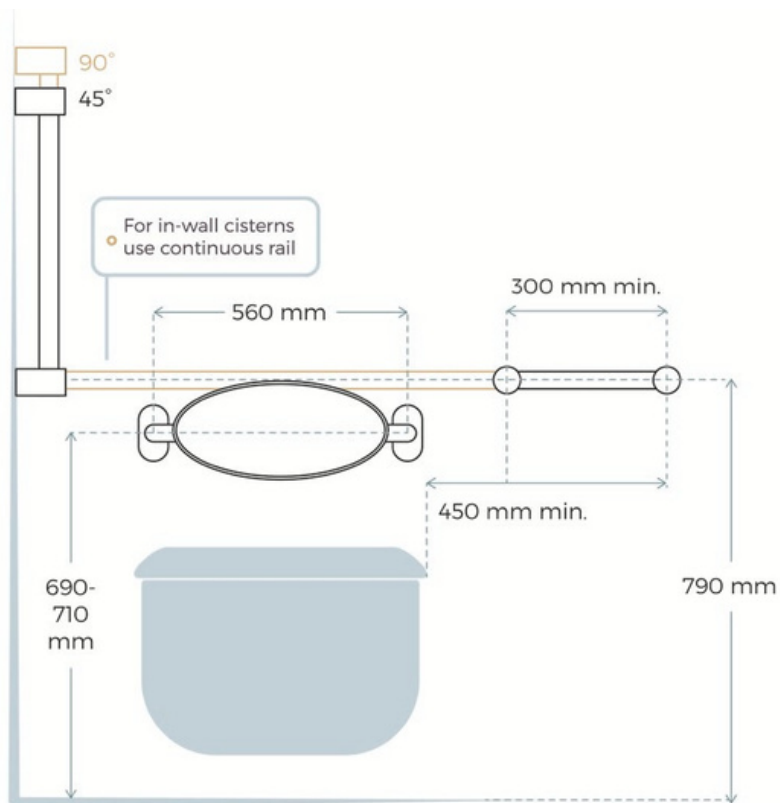
Backrest can be
quickly removed and
replaced with caps
R1B7

AS1428.1 Toilet Set Installation



There are options to suit in wall or external toilet cisterns.

FRONT VIEW

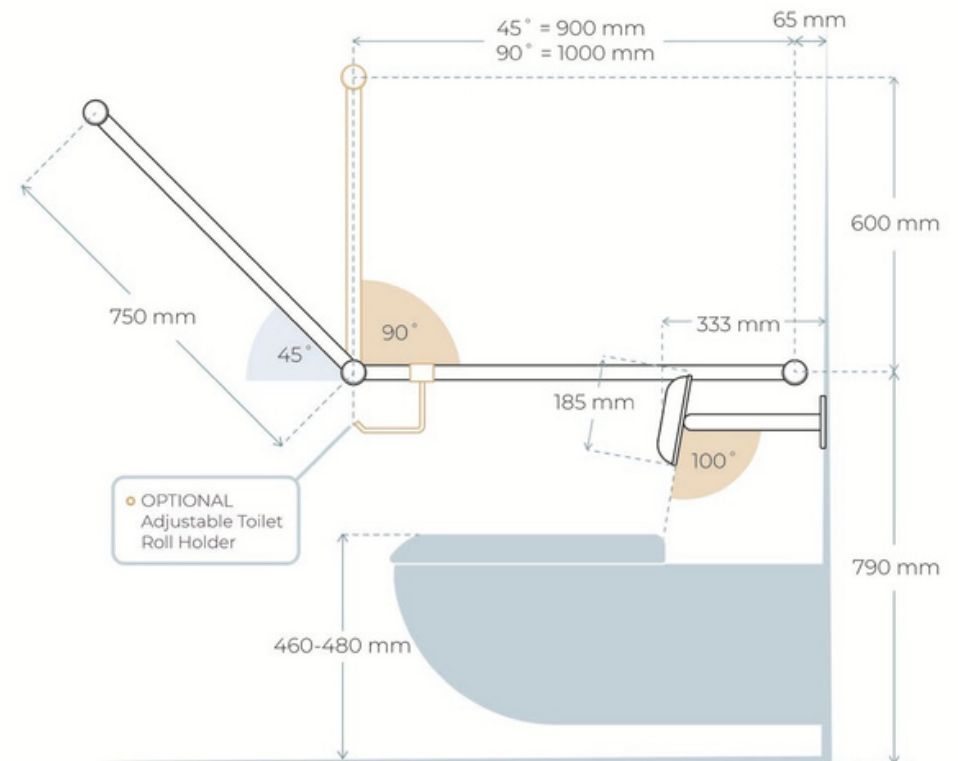


○ Avail Toilet Back Rest

○ Calibre Mod 45 or 90 Degree DDA Toilet Grab Rail Set

Both 45 and 90 degree rails are available. 45 degree is ideal however if space is limited the 90 degree is suitable.

SIDE VIEW



○ Add on toilet roll holder (R01AT)



AVAIL PRODUCTS:

- 1 Calibre T Bar Shower Grab Rail Set
 - 2 Liberty Fold Up Shower Seat 960mm
 - 3 Tapware
 - 4 Accessories: Robe Hooks, Optional Air Shower, Shelf
- All available in our full colour range in removable adaptable options



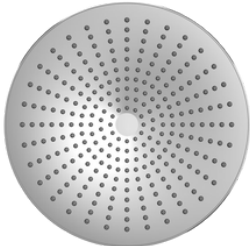

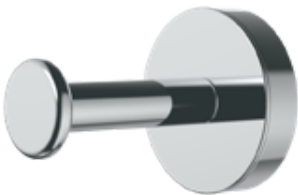
Buildings like Hotels require a number of accessible showers.

A DDA wheelchair accessible shower requires a 960mm wide seat, vertical and horizontal grab rail with adjustable shower set attached to the vertical rail and robe hooks beside the seat. The shower cubicle must also meet specific dimensions.



Product Name	Info & Code Finish Code: C, MB, GM, BN, BB or BG
 <p>Calibre Mod 32 DDA T Bar Grab Rail & Adjustable Shower Set</p> <p>1100x750 grab rail set,</p> <p>Shower set including: multifunction 4 star 7.5 litre per min hand shower head Lic 1632, 32 mm adjustable rail slider, wall outlet, 1.5m hose Backflow prevention included in hand piece</p>	<p>32mm Diameter Rails & Shower Set R01S117T</p> <hr/> <p>1100 x 750 Rails & Adjustable Slider Only R01117T</p>
 <p>Mecca Care Shower Mixer</p>	<p>Extended Lever Wall Mixer NR221909x</p>
 <p>Mecca Shower Mixer with Diverter</p>	<p>This option allows you to switch between overhead or hand shower heads NR221909a</p>



Product Name	Info & Code Finish Code: C, MB, GM, BN, BZ, GR or BG
 <p>Opal Air Shower Head</p>	<p>Flow Rate: 2 Star 11L/min</p> <p>WELS Registration: S15214 NR508079</p>
 <p>Shower Arm</p>	<p>Universal Shower Arm for Overhead Shower Heads 344mm From Wall</p> <p>NR506</p>
 <p>Calibre Robe Hook</p>	<p>Robe hook attaches to any Calibre wall bracket. GST applies (included)</p> <p>R1B6</p>



Product Name

Info & Code

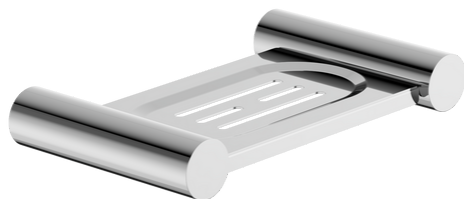
Finish Code: C, MB, GM, BN, BB or BG



Mecca Metal Shelf

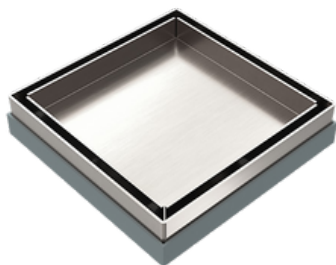
450mm

NR2387a

Mecca Soap Dish
Holder

150mm

NR2381

Tile Insert Floor
Waste 100mm Outlet130x130mm
Overall

NRFW002

Tile Insert V Channel Floor
Grate 89mm Outlet with
Hole Saw900x106mm
Overall

NRFG001HS



Product Name

Info & Code Finish Code: C, MB, GM, BN, BB or BG



Liberty DDA Shower
Seat 960 wide White

Wall cover plate available
in different finishes

S01DW



Liberty DDA Shower
Seat 960 wide Black

Wall cover plate
available in different
finishes

S01DB

Wash Basin



AVAIL PRODUCTS:

- 1 Basin mixer with Extended lever tap
 - 2 Shelf/Towel Holders
 - 3 Waste/Drains
- All available in our full colour range



Basins require the tapware within easy reach and knee clearance underneath for a wheelchair user.

A grab rail here can be handy to help hold onto to keep stable, this can be combined with a towel holder

WWW.AVAIL.DESIGN




Australian Standard
AS1428.1-2009
Design for Access &
Mobility






Tested by a NATA
accredited
laboratory





Product Name	Info & Code Finish Code: C, BN, MB, GM, BN, BZ, or BG
 <p>Mecca Care Basin Mixer</p>	<p>Flow Rate: 5 Star 5L/min NR221901d</p>
 <p>Calibre Mod 32 Grab Rail with Towel Holder: 300</p>	<p>300mm R01T30</p>
 <p>Mecca Towel Ring</p>	<p>240x106mm NR2380a</p>
 <p>Claudia Sensor Mixer</p>	<p>Power Supply: AA Battery or AC 220V/50Hz LED Temperature Display NR222101</p>



Product Name	Info & Code Finish Code: C, BN, MB, GM, BN, BZ, or BG
 <p>Bottle Trap</p>	<p>40mm NRA186e</p>
 <p>Universal Pop Up Waste</p>	<p>NRA706</p>
 <p>Mecca Soap Bottle Holder</p>	<p>NR1985</p>
 <p>Mecca Metal Shelf</p>	<p>450mm NR2387a</p>





AVAIL PRODUCTS:

- 1 Calibre Mod Ambulant Toilet Grab Rail - 2 options: 45 or 90 degrees
 - 2 Add on toilet roll holder - single or double
- All available in our full colour range



Ambulant grab rails are required in both male and female public toilets and commercial toilet facilities. Both left hand and right hand rails are required and our add on toilet roll holder is suitable for either side.

Avail Ambulant grab rails have been independently tested and approved to all AS1428.1 requirements for grab rails.

WWW.AVAIL.DESIGN

Australian Standard
AS1428.1-2009
Design for Access &
Mobility

Tested by a NATA
accredited
laboratory





Product Name

Info & Code

Finish Code: C, MB, GM, BN, BB or BG



Calibre Mod 32
Ambulant Toilet
Grab Rail 90 degree

450mm in
each direction

R01A490



Calibre Mod 32
Ambulant Toilet
Grab Rail 45 degree

450 Horizontal x
750mm Angled Rail

R01A445

**Product Name****Info & Code****Finish Code: C, MB, GM, BN, BB or BG**

Add on Toilet Roll
Holder (for any 32mm
Grab Rail)

Can be added onto
any Calibre Mod rail

R01AH

Add on Double Toilet
Roll Holder (for any
32mm Grab Rail)

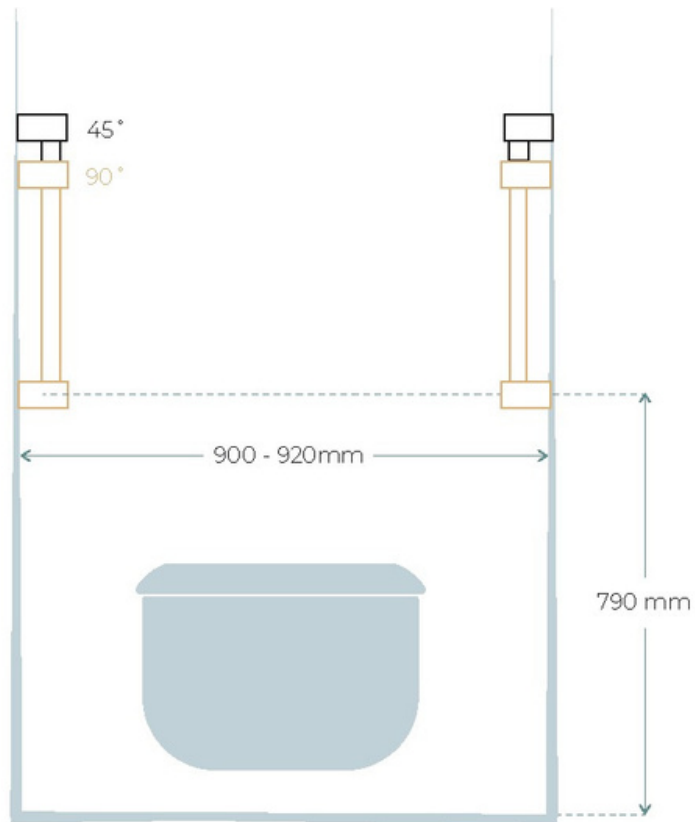
Can be added onto
any Calibre Mod rail

R01AHD

Ambulant Toilet Rails Installation

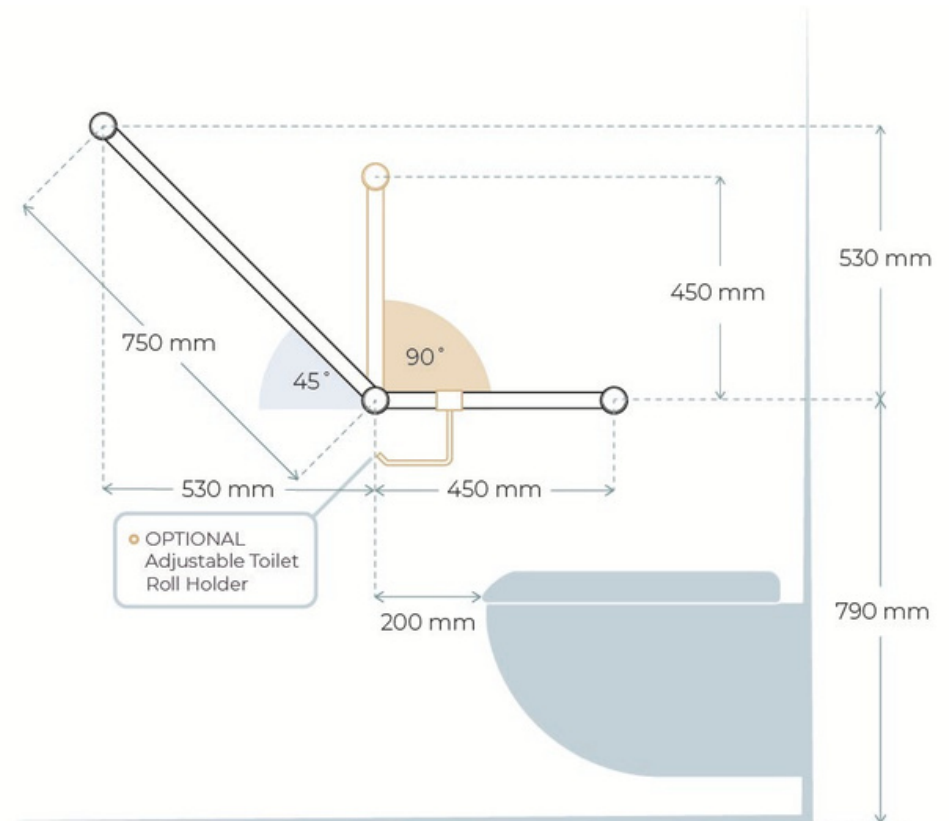


FRONT VIEW



- Calibre Mod Ambulant 45 or 90 Degree Angled Grab Rail

SIDE VIEW



- Add on toilet roll holder



1300 945 720



INFO.AVAIL.DESIGN



WWW.AVAIL.DESIGN

